

# Creating a Navigation Button Bar using Frames

## About a Navigation Bar (Navbar) in Frames

*The advantage of using a navbar with frames are:*

- *Buttons for the navbar only have to load once for your site*
- *You can move about your site without always going back the the home page*
- *The down state of a button always shows the current part of your site being viewed*

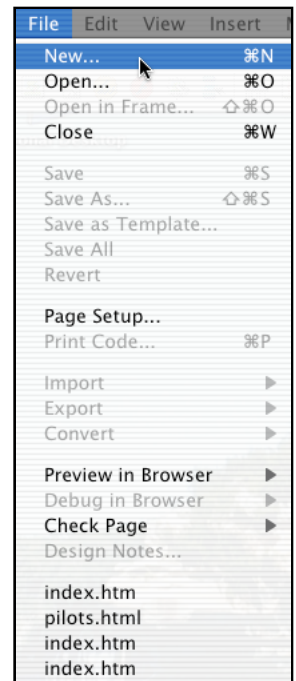
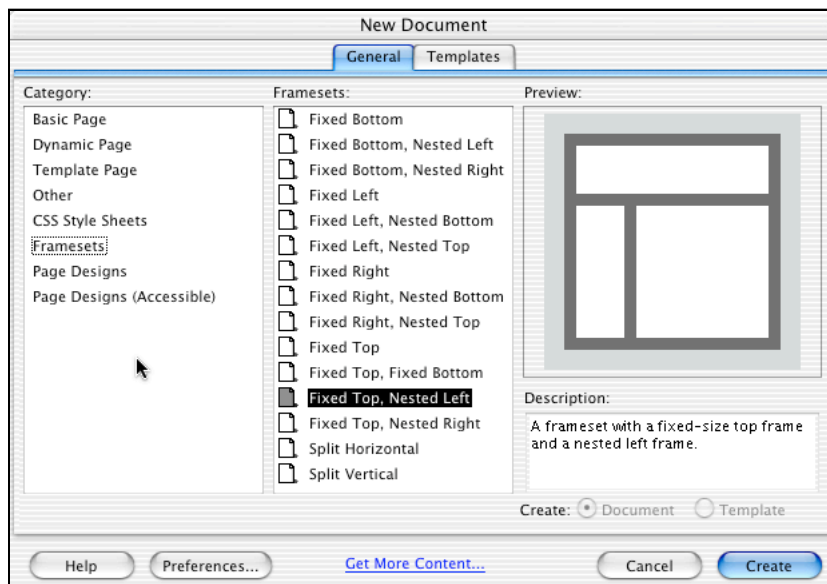
*The two most common problems with frames are:*

- *Printing -- only the frame where the cursor is prints*
- *Older browsers may not render frames.*

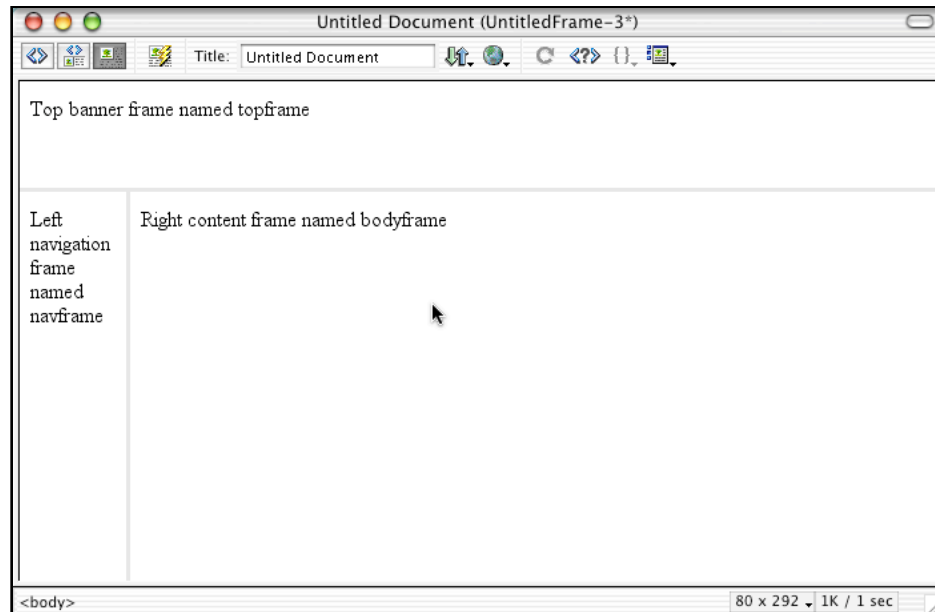
*In this document, I will use three frames as my example. A top banner frame -- I will name topframe, a left navigation frame -- I will name navframe, and a right content frame -- I will name bodyframe. Each of these frames is an html document. The really strange thing is extra (fourth) html file you never get to see with Dreamweaver. This is the file creates the frames and pulls in the correct html files that make up the frame. You can view it with a text editor like AppleWorks. You can even edit it with AppleWorks provided you save it as plain text with the same name and replace the file. Before proceeding with these instructions, you need to use Fireworks to create your buttons and you have a folder you defined for your Website. Let's get started.*

### To create your frames

1. Select **New** from the **File** menu. A *New Document* window appears.
2. Select **Framesets** in the left *Category* panel.
3. Select **Fixed Top, Nested Left** in the *Framesets* listing in the *General* tab.
4. Click on the **Create** button.

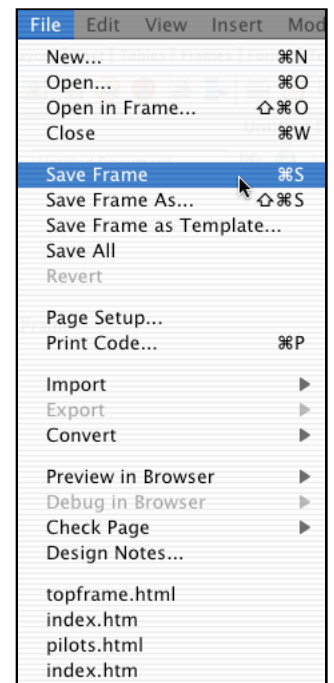
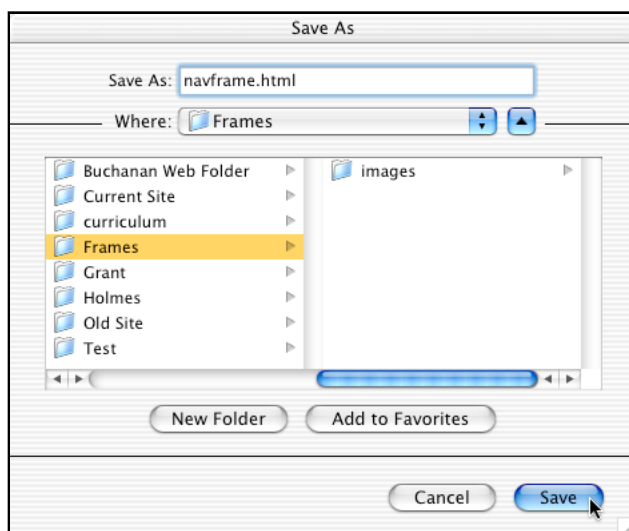


To help you visualize the frames, you may type something in each one. This is not necessary.



### To save your frames for the first time

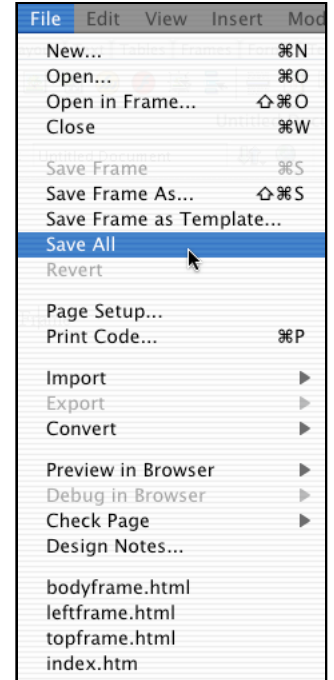
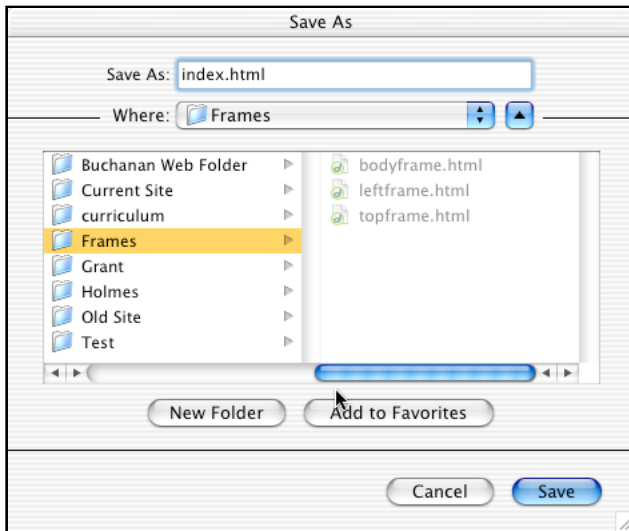
1. Click in the left navigation frame
2. Select **Save Frame** from the **File** menu. A *Save As* window appears.
3. Enter **navframe.html** in the *Save As* text box.
4. Navigate to your Website folder.
5. Click on the **Save** button.
6. Repeat the above steps for the other two frames -- **topframe** and **bodyframe**.



## To save your index frame for the first time

1. Select **Save All** from the **File** menu. A *Save As* window appears.
2. Enter **index.html** in the *Save As* text box.
3. Navigate to your Website folder.
4. Click on the **Save** button.

**Note:** Use **Save All** in the future.



I used AppleWorks to open the index.html file to show you what is in it. You could edit this, but I would advise against it.

```
<!DOCTYPE HTML PUBLIC "-//W3C//DTD HTML 4.01 Frameset//EN"
"http://www.w3.org/TR/html4/frameset.dtd">
<html>
<head>
<title>Untitled Document</title>
<meta http-equiv="Content-Type" content="text/html; charset=iso-8859-1">
</head>

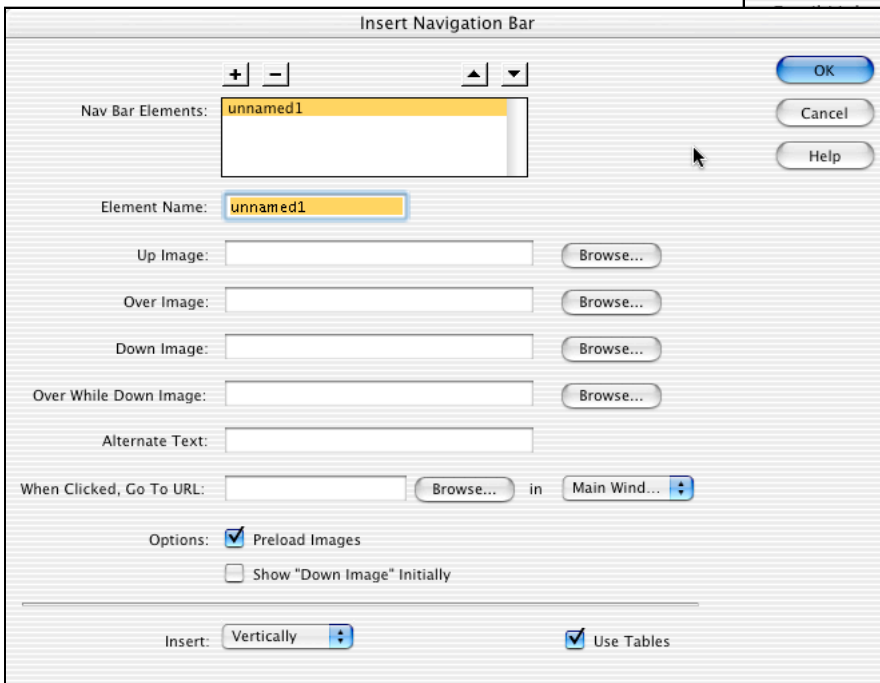
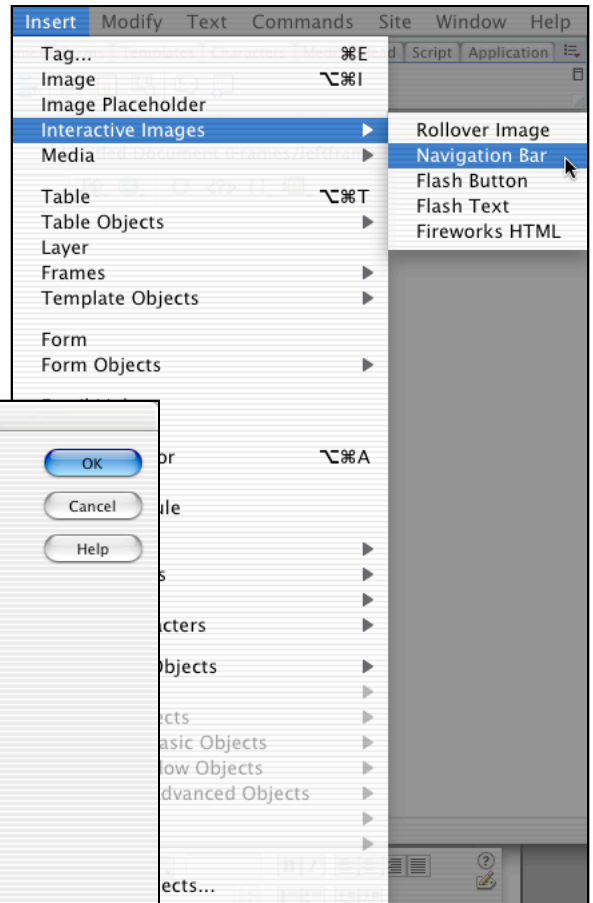
<frameset rows="80,*" cols="*" frameborder="NO" border="0" framespacing="0">
<frame src="topframe.html" name="topFrame" scrolling="NO" noresize >
<frameset cols="80,*" frameborder="NO" border="0" framespacing="0">
<frame src="navframe.html" name="leftFrame" scrolling="NO" noresize>
<frame src="bodyframe.html" name="mainFrame">
</frameset>
</frameset>
<noframes><body>

</body></noframes>
</html>
```

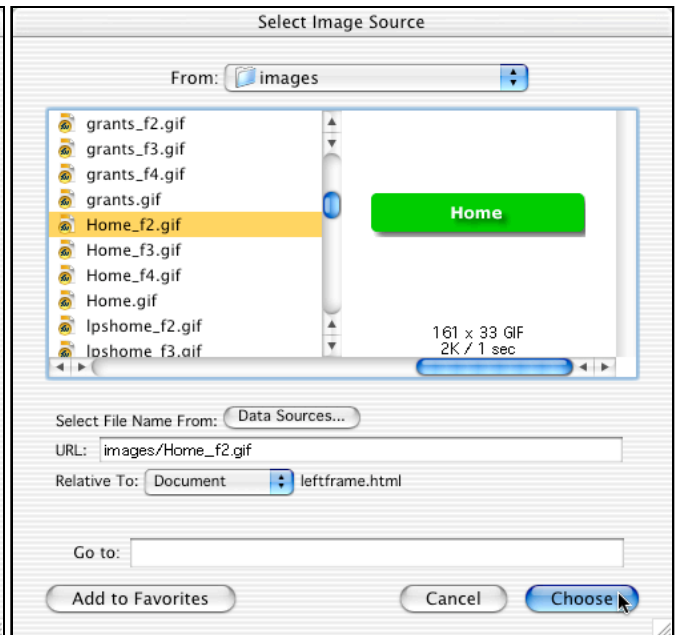
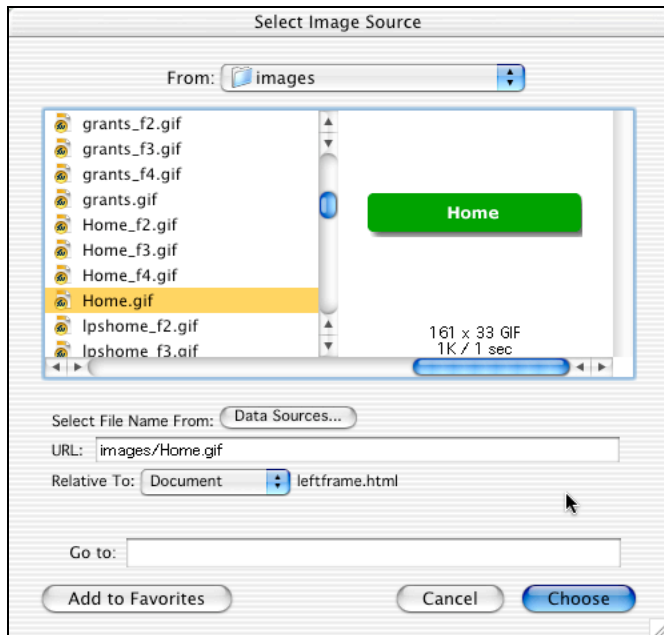
## To create your navbar

1. Select **Navigation Bar** from the **Interactive Images** subment from the **Insert** menu. An *Insert Navigation Bar* window appears.

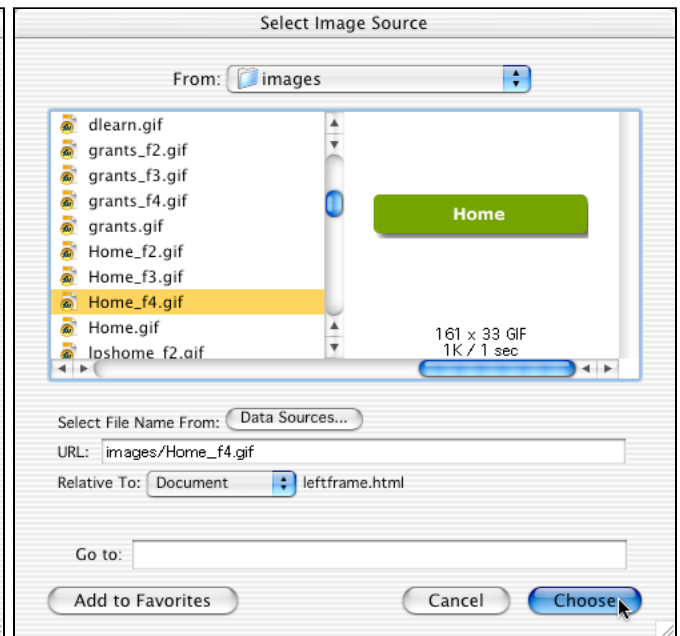
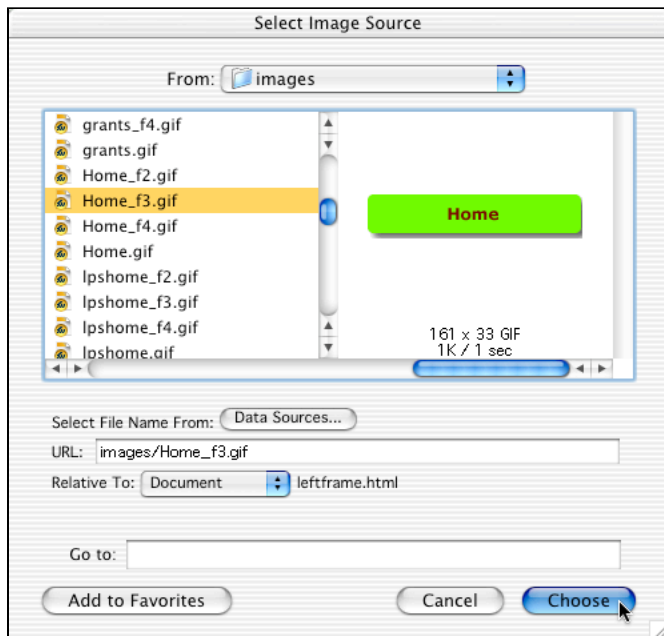
Here you will use the Browse buttons to insert each state for a button. Then use the + button to insert another button.



2. Add your Up Image for your Home button (Home.gif).
3. Add your Over Image for your Home button (Home\_f2.gif).

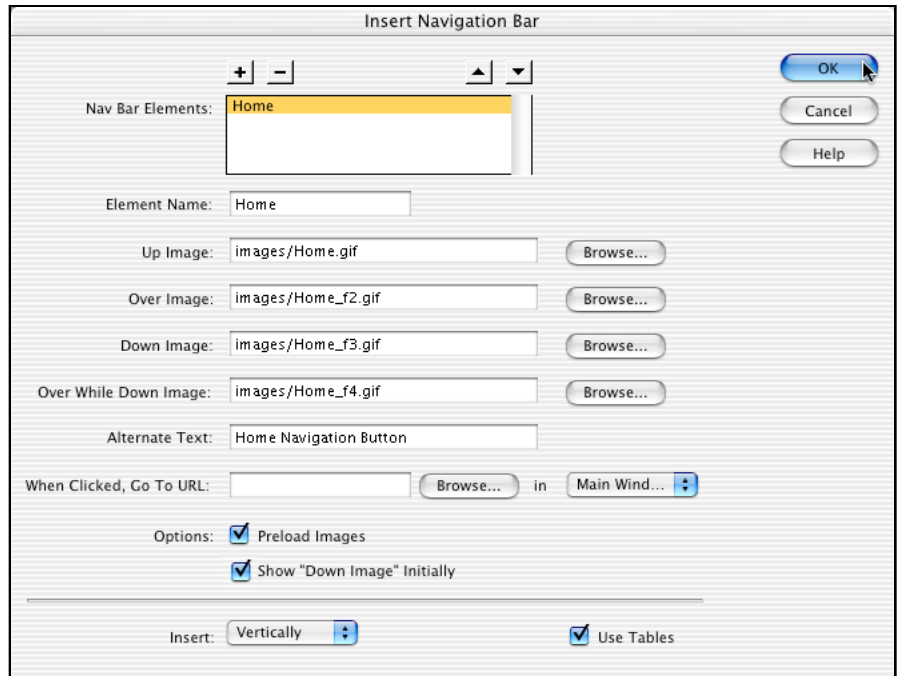


4. Add your Down Image for your Home button (Home\_f3.gif).
5. Add your Over While Down Image for your Home button (Home\_f4.gif)



6. Check the *Preload Images* checkbox for better performance.
7. Check the *Show "Down Image"* checkbox for your home page.
8. Select **Vertically** from the *Insert* popup menu.

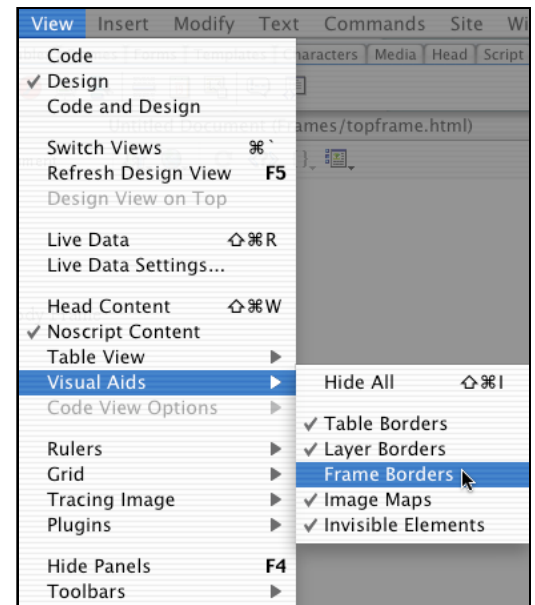
Click on the + button and repeat the above process for each of your other buttons before clicking on the **OK** button.



### To adjust the frame widths

1. Select **Frame Borders** from the **Visual Aids** submenu under the **View** menu.

You can now move the frame to show all of your buttons.



**To edit your navbar after you have created it**

1. Click in the navbar frame.
2. Select **Navigation Bar** from the **Modify** menu.

You can now make any changes to your navbar.

